



Title Plan - DP 519256

Survey Number DP 519256
Surveyor Reference 1520-139618-01 Lakes Stage 3I
Surveyor Michael Peter Dewhirst
Survey Firm Harrison Grierson Consultants Ltd
Surveyor Declaration I Michael Peter Dewhirst, being a licensed cadastral surveyor, certify that:
(a) this dataset provided by me and its related survey are accurate, correct and in accordance with the Cadastral Survey Act 2002 and the Rules for Cadastral Survey 2010, and
(b) the survey was undertaken by me or under my personal direction.
Declared on 21 Mar 2018 03:55 PM

Survey Details

Dataset Description Lots 504-588, 790, 913-915, 943-945, 954 and 980-982 being a subdivision of Lot 1005 DP 507200
Status Deposited
Land District South Auckland
Submitted Date 21/03/2018
Survey Class Class A
Survey Approval Date 27/03/2018
Deposit Date 21/03/2018

Territorial Authorities

Tauranga City

Comprised In

CT 769905

Created Parcels

Parcels	Parcel Intent	Area	CT Reference
Area T Deposited Plan 519256	Easement		
Area U Deposited Plan 519256	Easement		
Area RA Deposited Plan 519256	Land Covenant		
Area V Deposited Plan 519256	Easement		
Area W Deposited Plan 519256	Easement		
Lot 504 Deposited Plan 519256	Fee Simple Title	0.0657 Ha	815334
Lot 505 Deposited Plan 519256	Fee Simple Title	0.0642 Ha	815335
Lot 506 Deposited Plan 519256	Fee Simple Title	0.0600 Ha	815336
Lot 507 Deposited Plan 519256	Fee Simple Title	0.0600 Ha	815337
Lot 508 Deposited Plan 519256	Fee Simple Title	0.0637 Ha	815338
Lot 509 Deposited Plan 519256	Fee Simple Title	0.0461 Ha	815339
Lot 510 Deposited Plan 519256	Fee Simple Title	0.0450 Ha	815340
Lot 511 Deposited Plan 519256	Fee Simple Title	0.0511 Ha	815341
Lot 512 Deposited Plan 519256	Fee Simple Title	0.0551 Ha	815342
Lot 513 Deposited Plan 519256	Fee Simple Title	0.0552 Ha	815343
Lot 514 Deposited Plan 519256	Fee Simple Title	0.0500 Ha	815344
Lot 515 Deposited Plan 519256	Fee Simple Title	0.0350 Ha	815345
Lot 516 Deposited Plan 519256	Fee Simple Title	0.0350 Ha	815346
Lot 517 Deposited Plan 519256	Fee Simple Title	0.0807 Ha	815347
Lot 518 Deposited Plan 519256	Fee Simple Title	0.0356 Ha	815348

Title Plan - DP 519256

Created Parcels

Parcels	Parcel Intent	Area	CT Reference
Lot 519 Deposited Plan 519256	Fee Simple Title	0.0357 Ha	815349
Lot 520 Deposited Plan 519256	Fee Simple Title	0.0505 Ha	815350
Lot 521 Deposited Plan 519256	Fee Simple Title	0.0533 Ha	815351
Lot 522 Deposited Plan 519256	Fee Simple Title	0.0548 Ha	815352
Lot 523 Deposited Plan 519256	Fee Simple Title	0.0550 Ha	815353
Lot 524 Deposited Plan 519256	Fee Simple Title	0.0550 Ha	815354
Lot 525 Deposited Plan 519256	Fee Simple Title	0.0548 Ha	815355
Lot 526 Deposited Plan 519256	Fee Simple Title	0.0524 Ha	815356
Lot 527 Deposited Plan 519256	Fee Simple Title	0.0537 Ha	815357
Lot 528 Deposited Plan 519256	Fee Simple Title	0.0550 Ha	815358
Lot 529 Deposited Plan 519256	Fee Simple Title	0.0550 Ha	815359
Lot 530 Deposited Plan 519256	Fee Simple Title	0.0550 Ha	815360
Lot 531 Deposited Plan 519256	Fee Simple Title	0.0524 Ha	815361
Lot 532 Deposited Plan 519256	Fee Simple Title	0.0542 Ha	815362
Lot 533 Deposited Plan 519256	Fee Simple Title	0.0525 Ha	815363
Lot 534 Deposited Plan 519256	Fee Simple Title	0.0524 Ha	815364
Lot 535 Deposited Plan 519256	Fee Simple Title	0.0699 Ha	815365
Lot 536 Deposited Plan 519256	Fee Simple Title	0.0617 Ha	815366
Lot 537 Deposited Plan 519256	Fee Simple Title	0.0739 Ha	815367
Lot 538 Deposited Plan 519256	Fee Simple Title	0.0591 Ha	815368
Lot 539 Deposited Plan 519256	Fcc Simple Titlc	0.0576 Ha	815369
Lot 540 Deposited Plan 519256	Fee Simple Title	0.0540 Ha	815370
Lot 541 Deposited Plan 519256	Fee Simple Title	0.0540 Ha	815371
Lot 542 Deposited Plan 519256	Fee Simple Title	0.0540 Ha	815372
Lot 543 Deposited Plan 519256	Fee Simple Title	0.0536 Ha	815373
Lot 544 Deposited Plan 519256	Fee Simple Title	0.0546 Ha	815374
Lot 545 Deposited Plan 519256	Fee Simple Title	0.0592 Ha	815375
Lot 546 Deposited Plan 519256	Fee Simple Title	0.0686 Ha	815376
Lot 547 Deposited Plan 519256	Fee Simple Title	0.0700 Ha	815377
Lot 548 Deposited Plan 519256	Fee Simple Title	0.0678 Ha	815378
Lot 549 Deposited Plan 519256	Fee Simple Title	0.0624 Ha	815379
Lot 550 Deposited Plan 519256	Fee Simple Title	0.0559 Ha	815380
Lot 551 Deposited Plan 519256	Fee Simple Title	0.0502 Ha	815381
Lot 552 Deposited Plan 519256	Fee Simple Title	0.0430 Ha	815382
Lot 553 Deposited Plan 519256	Fee Simple Title	0.0417 Ha	815383
Lot 554 Deposited Plan 519256	Fcc Simple Title	0.0462 Ha	815384
Lot 555 Deposited Plan 519256	Fee Simple Title	0.0554 Ha	815385
Lot 556 Deposited Plan 519256	Fee Simple Title	0.0593 Ha	815386
Lot 557 Deposited Plan 519256	Fee Simple Title	0.0555 Ha	815387
Lot 558 Deposited Plan 519256	Fee Simple Title	0.0536 Ha	815388
Lot 559 Deposited Plan 519256	Fee Simple Title	0.0504 Ha	815389
Lot 560 Deposited Plan 519256	Fee Simple Title	0.0463 Ha	815390
Lot 561 Deposited Plan 519256	Fee Simple Title	0.0452 Ha	815391
Lot 562 Deposited Plan 519256	Fee Simple Title	0.0507 Ha	815392

Title Plan - DP 519256

Created Parcels

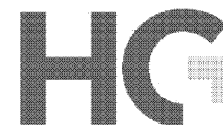
Parcels	Parcel Intent	Area	CT Reference
Lot 563 Deposited Plan 519256	Fee Simple Title	0.0529 Ha	815393
Lot 564 Deposited Plan 519256	Fee Simple Title	0.0493 Ha	815394
Lot 565 Deposited Plan 519256	Fee Simple Title	0.0453 Ha	815395
Lot 566 Deposited Plan 519256	Fee Simple Title	0.0398 Ha	815396
Lot 567 Deposited Plan 519256	Fee Simple Title	0.0401 Ha	815397
Lot 568 Deposited Plan 519256	Fee Simple Title	0.0424 Ha	815398
Lot 569 Deposited Plan 519256	Fee Simple Title	0.0434 Ha	815399
Lot 570 Deposited Plan 519256	Fee Simple Title	0.0429 Ha	815400
Lot 571 Deposited Plan 519256	Fee Simple Title	0.0429 Ha	815401
Lot 572 Deposited Plan 519256	Fee Simple Title	0.0486 Ha	815402
Lot 573 Deposited Plan 519256	Fee Simple Title	0.0800 Ha	815403
Lot 574 Deposited Plan 519256	Fee Simple Title	0.0681 Ha	815404
Lot 575 Deposited Plan 519256	Fee Simple Title	0.0607 Ha	815405
Lot 576 Deposited Plan 519256	Fee Simple Title	0.0571 Ha	815406
Lot 577 Deposited Plan 519256	Fee Simple Title	0.1208 Ha	815407
Lot 578 Deposited Plan 519256	Fee Simple Title	0.0630 Ha	815408
Lot 579 Deposited Plan 519256	Fee Simple Title	0.0621 Ha	815409
Lot 580 Deposited Plan 519256	Fee Simple Title	0.0598 Ha	815410
Lot 581 Deposited Plan 519256	Fee Simple Title	0.0630 Ha	815411
Lot 582 Deposited Plan 519256	Fee Simple Title	0.0610 Ha	815412
Lot 583 Deposited Plan 519256	Fcc Simple Titlc	0.0610 Ha	815413
Lot 584 Deposited Plan 519256	Fee Simple Title	0.0631 Ha	815414
Lot 585 Deposited Plan 519256	Fee Simple Title	0.0612 Ha	815415
Lot 586 Deposited Plan 519256	Fee Simple Title	0.0630 Ha	815416
Lot 587 Deposited Plan 519256	Fee Simple Title	0.0630 Ha	815417
Lot 588 Deposited Plan 519256	Fee Simple Title	0.0826 Ha	815418
Lot 790 Deposited Plan 519256	Vesting on Deposit for Recreation Reserve (Territorial Authority)	3.5585 Ha	815329
	Road	0.7333 Ha	
	Road	1.2752 Ha	
	Road	0.0423 Ha	
Lot 943 Deposited Plan 519256	Vesting on Deposit for Local Purpose Reserve	1.6393 Ha	815330
Lot 944 Deposited Plan 519256	Vesting on Deposit for Recreation Reserve (Territorial Authority)	0.2736 Ha	815331
Lot 945 Deposited Plan 519256	Vesting on Deposit for Local Purpose Reserve	7.1501 Ha	815332
Lot 954 Deposited Plan 519256	Vesting on Deposit for Local Purpose Reserve	0.0356 Ha	815333
Lot 980 Deposited Plan 519256	Fee Simple Title	0.0221 Ha	Multiple
Lot 981 Deposited Plan 519256	Fee Simple Title	0.0220 Ha	Multiple
Lot 982 Deposited Plan 519256	Fee Simple Title	0.0810 Ha	Multiple



Title Plan - DP 519256

Created Parcels

Parcels	Parcel Intent	Area	CT Reference
Area A Deposited Plan 519256	Easement		
Area B Deposited Plan 519256	Easement		
Area C Deposited Plan 519256	Easement		
Area D Deposited Plan 519256	Easement		
Area E Deposited Plan 519256	Easement		
Area F Deposited Plan 519256	Easement		
Area G Deposited Plan 519256	Easement		
Area H Deposited Plan 519256	Easement		
Area I Deposited Plan 519256	Easement		
Area J Deposited Plan 519256	Easement		
Area K Deposited Plan 519256	Easement		
Area L Deposited Plan 519256	Easement		
Area M Deposited Plan 519256	Easement		
Area N Deposited Plan 519256	Easement		
Area O Deposited Plan 519256	Easement		
Area P Deposited Plan 519256	Easement		
Area Q Deposited Plan 519256	Easement		
Area R Deposited Plan 519256	Easement		
Area S Deposited Plan 519256	Easement		
Total Area		<hr/> 19.5880 Ha	



Land Registration District

South Auckland

Plan Number

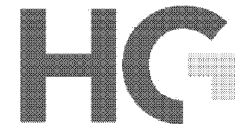
DP 519256

TCC Ref: RC21332-12

Harrison Grierson Ref: 1520-139618-01

Memorandum of Easements (Pursuant to s243 Resource Management Act 1991)			
Purpose	Shown	Servient Tenement	Dominant Tenement
Right of Way	A	Lot 980 hereon	Lots 511-514 hereon
Right to drain Water & Sewage	B	Lot 981 hereon	Lots 535-538 hereon
Right to convey Electricity, Gas & Water		Lot 982 hereon	Lots 575-583 hereon
Right to convey Telecommunications and Computer Media			

Memorandum of Easements in Gross (Pursuant to s243 Resource Management Act 1991)			
Purpose	Shown	Servient Tenement	Grantee
Right to drain Water & Sewage	A	Lot 980 hereon	Tauranga City Council
	B	Lot 981 hereon	
	C	Lot 982 hereon	
	J	Lot 517 hereon	
	K	Lot 519 hereon	
	L	Lot 538 hereon	
	M	Lot 511 hereon	
N	Lot 506 hereon		
Right to drain Water	Q	Lot 574 hereon	
	R	Lot 575 hereon	
	S	Lot 576 hereon	
	V	Lot 944 hereon	



Memorandum of Easements in Gross (cont) (Pursuant to s243 Resource Management Act 1991)			
Purpose	Shown	Servient Tenement	Grantee
Right to drain Sewage	F	Lot 505 hereon	Tauranga City Council
	G	Lot 504 hereon	
	H	Lot 512 hereon	
	I	Lot 513 hereon	
	P	Lot 573 hereon	
	W	Lot 944 hereon	
Right to convey Water	C	Lot 982 hereon	
	T	Lot 945 hereon	
	U	Lot 790 hereon	

Schedule of Proposed Easements in Gross			
Purpose	Shown	Servient Tenement	Grantee
Right to convey Telecommunications and Computer Media	A	Lot 980 hereon	Ultrafast Fibre Ltd
	B	Lot 981 hereon	
	C	Lot 982 hereon	
Right to convey Gas	A	Lot 980 hereon	First Gas Ltd
	B	Lot 981 hereon	
	C	Lot 982 hereon	
	D	Lot 790 hereon	
Right to convey Electricity	C	Lot 982 hereon	Powerco Ltd
	E	Lot 790 hereon	



Schedule of Existing Easements in Gross (Pursuant to s243 Resource Management Act 1991)			
Purpose	Shown	Servient Tenement	Grantee / Document Number
Right to drain Water	O	Lot 945 hereon	Tauranga City Council EI 10750481.6

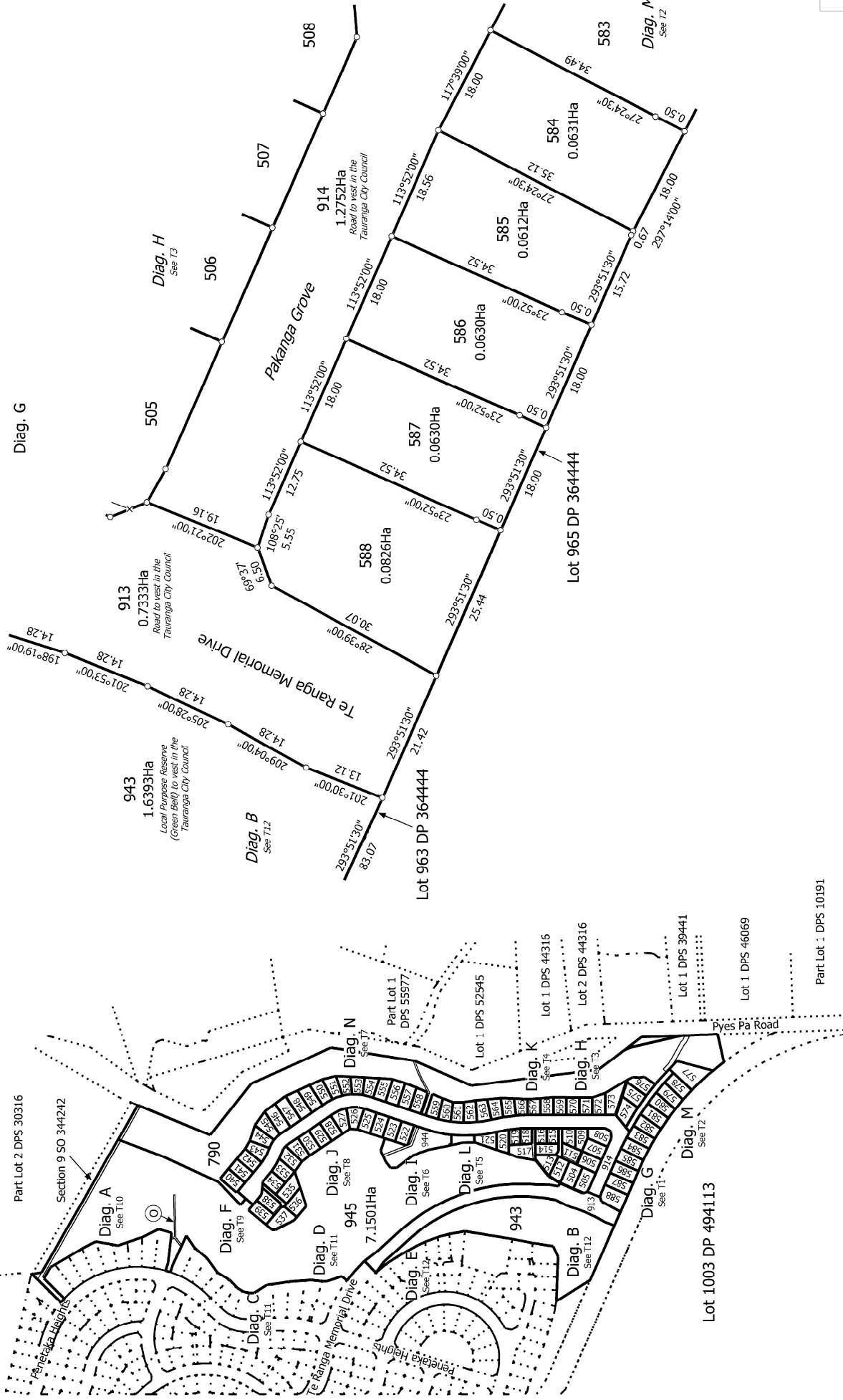
Area RA is subject to a Consent Notice

Amalgamation Conditions

That Lot 980 hereon be held as 4 undivided one quarter shares by the owners of Lots 511-514 hereon as Tenants in Common in the said shares and that individual computer registers be issued in accordance therewith. See request 1322193 and 1362181.

That Lot 981 hereon be held as 4 undivided one quarter shares by the owners of Lots 535-538 hereon as Tenants in Common in the said shares and that individual computer registers be issued in accordance therewith. See request 1322193 and 1362181.

That Lot 982 hereon be held as 9 undivided one ninth shares by the owners of Lots 575-583 hereon as Tenants in Common in the said shares and that individual computer registers be issued in accordance therewith. See request 1322193 and 1362181.



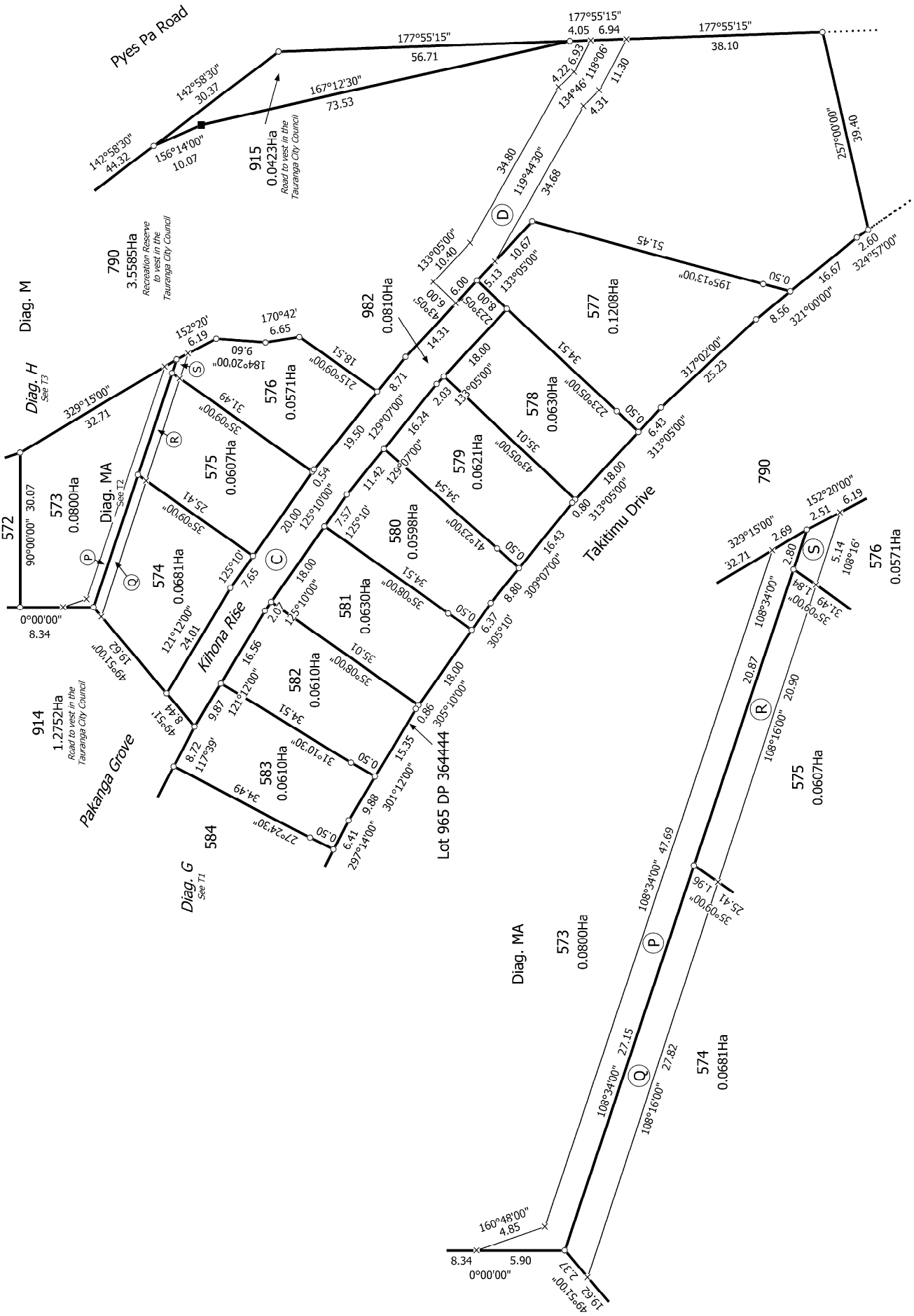
T 1/12

Lots 504-588, 790, 913-915, 943-945, 954 and 980-982 being a subdivision of
 Lot 1005 DP 507200

Surveyor: Michael Peter Dewhirst
 Firm: Harrison Grierson Consultants Ltd

Title Plan
 DP 519256

Deposited on: 21/03/2018



T 2/12

Land District: South Auckland

Digitally Generated Plan

Generated on: 13/04/2018 12:55:56 PM Page 3 of 19

Lots 504-588, 790, 913-915, 943-945, 954 and 980-982 being a subdivision of Lot 1005 DP 507200

Surveyor: Michael Peter Dewhirst
Firm: Harrison Grierson Consultants Ltd

Title Plan
DP 519256

Deposited on: 21/03/2018



Pyes Pa Road

172°40'30"
123.67

142°58'30"
44.32

790
3.5585Ha
Recreation Reserve
to vest in the
Tauranga City Council

T 3/12

Title Plan
DP 519256

Deposited on: 21/03/2018

Surveyor: Michael Peter Dewhirst
Firm: Harrison Grierson Consultants Ltd

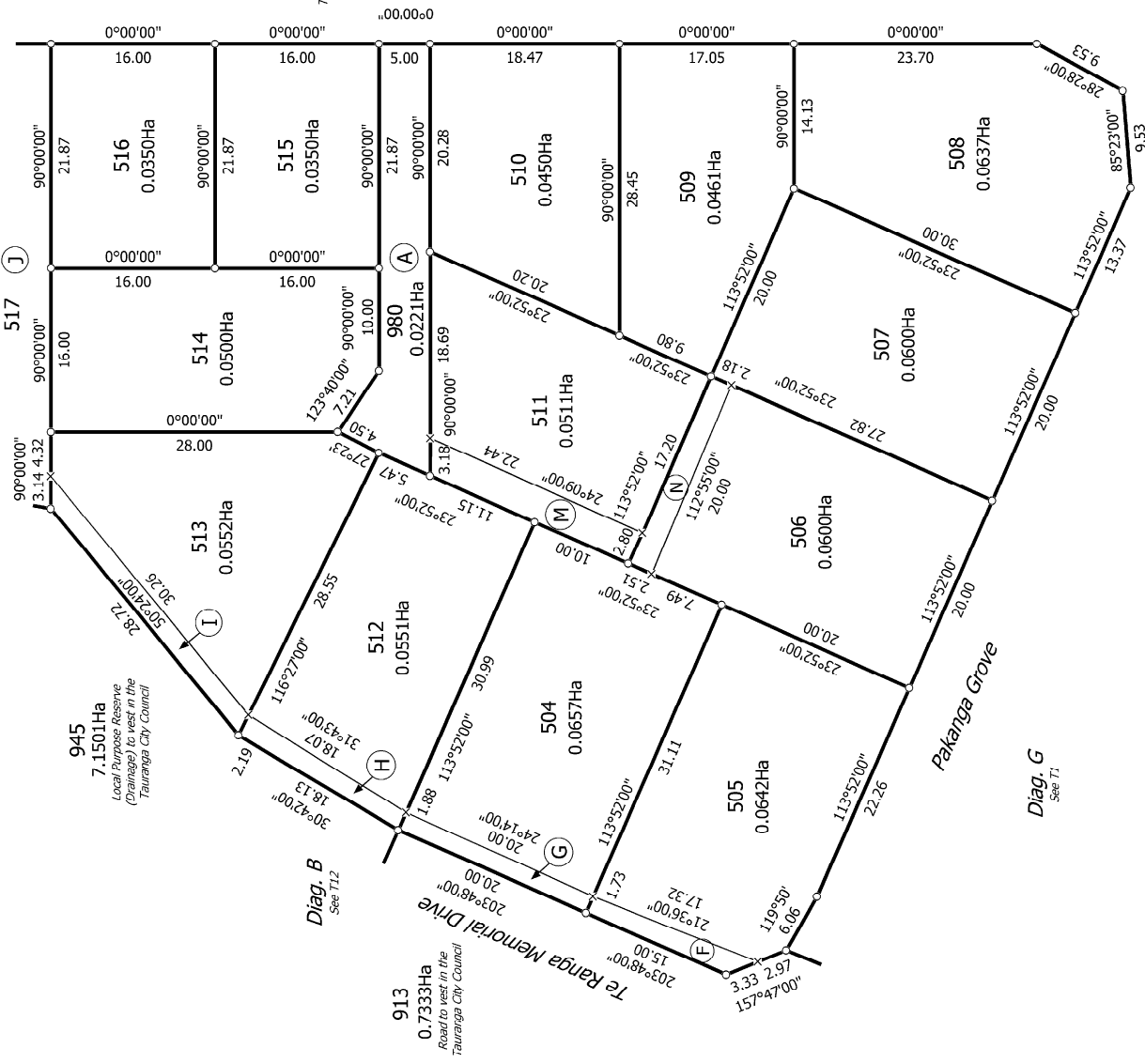
Lots 504-588, 790, 913-915, 943-945, 954 and 980-982 being a subdivision of
Lot 1005 DP 507200

Land District: South Auckland
Digitally Generated Plan
Generated on: 13/04/2018 12:55:56m Page 10 of 19

Diag. H

Diag. K
See T4

Diag. M
See T2



Land District: South Auckland

Digitally Generated Plan

Generated on: 13/04/2018 12:55:56m Page 10 of 19



T 4/12

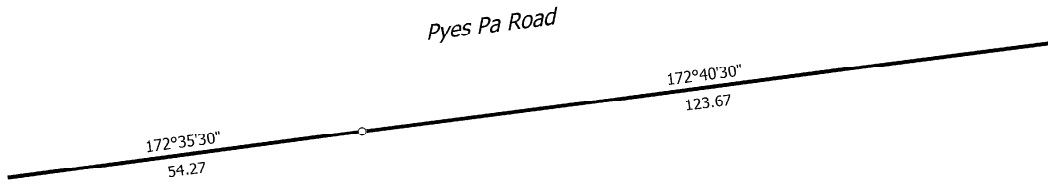
Title Plan
DP 519256
Deposited on: 21/03/2018

Surveyor: Michael Peter Dewhirst
Firm: Harrison Grierson Consultants Ltd

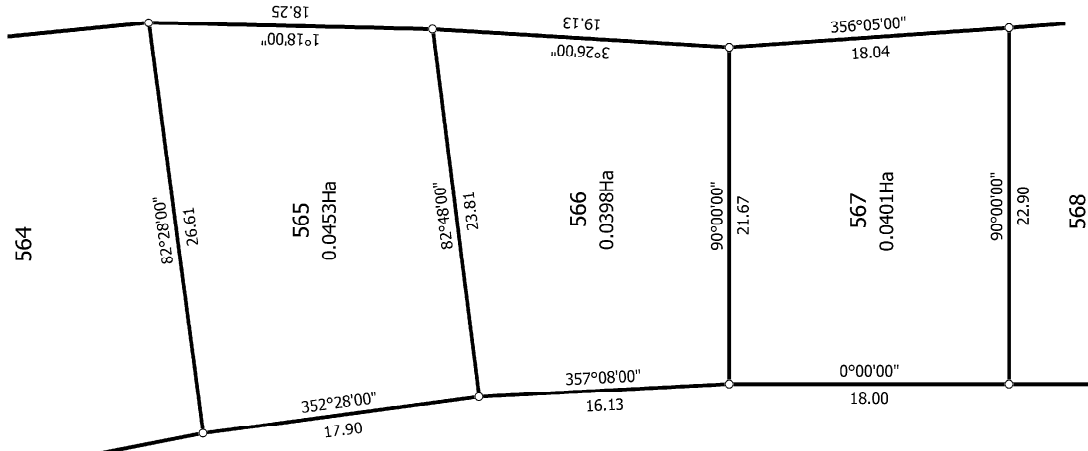
Lots 504-588, 790, 913-915, 943-945, 954 and 980-982 being a subdivision of
Lot 1005 DP 507200

Land District: South Auckland

Digitally Generated Plan
Generated on: 13/04/2018 12:55:56 PM Page 11 of 19



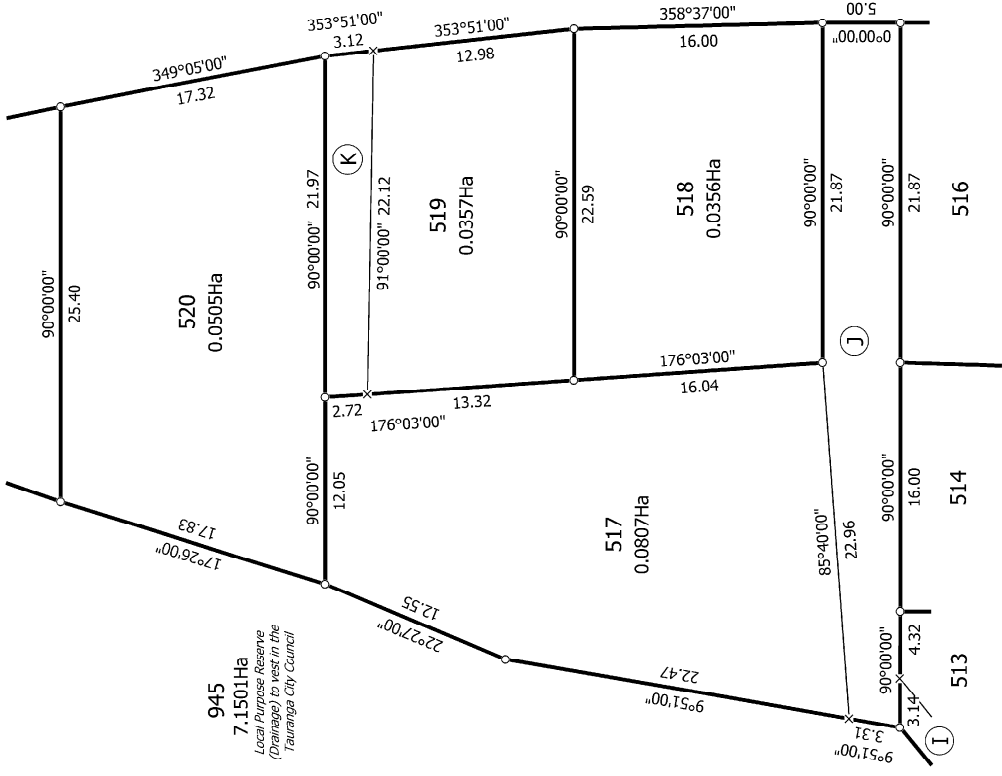
790
3.5585Ha
Recreation Reserve
to vest in the
Tauranga City Council



Pakanga Grove

Diag. L
See T5

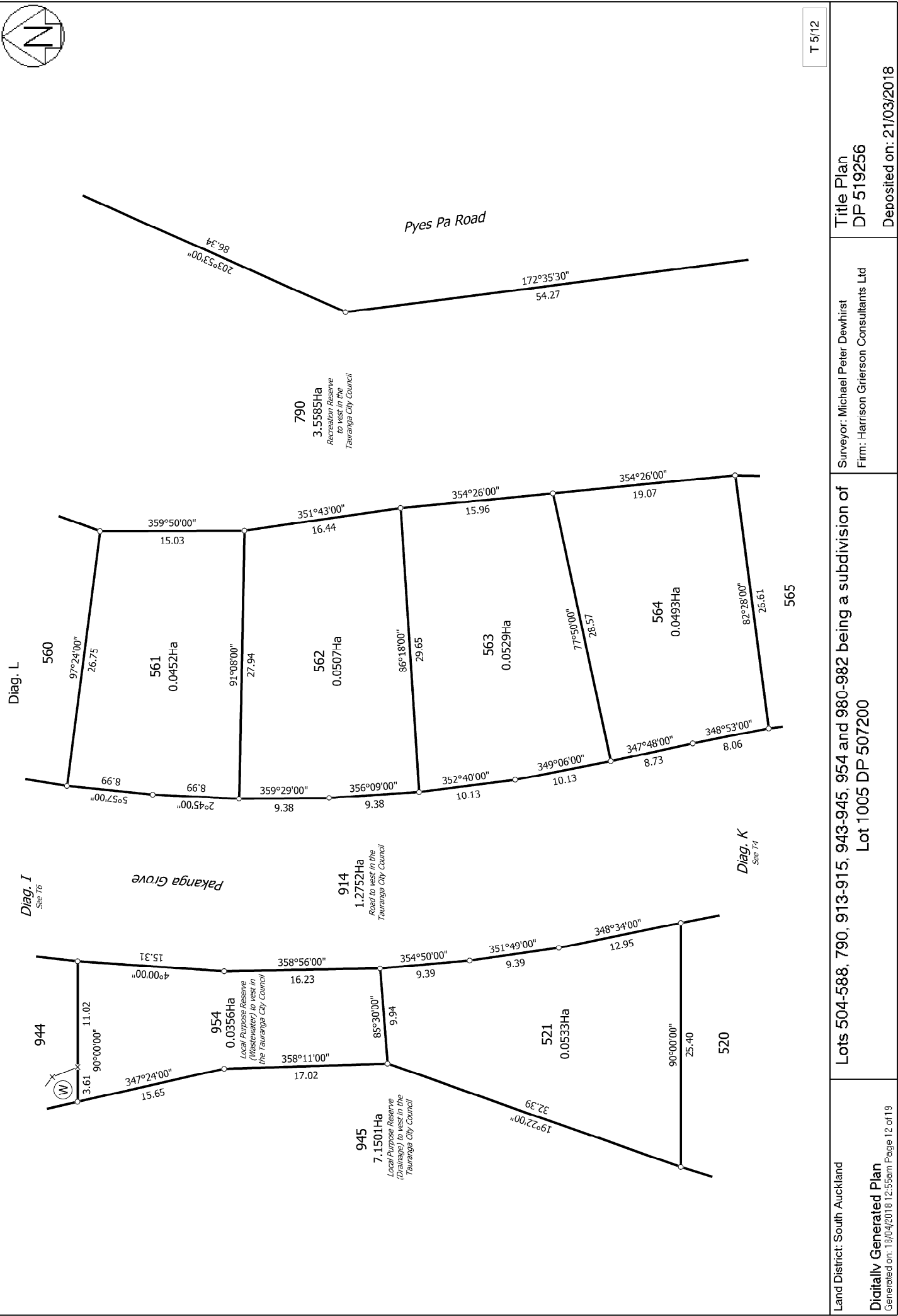
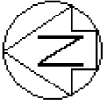
Diag. H
See T3



945
7.1501Ha
Local Purpose Reserve
(Drainage) to vest in the
Tauranga City Council

914
1.2752Ha
Road to vest in the
Tauranga City Council

Diag. K



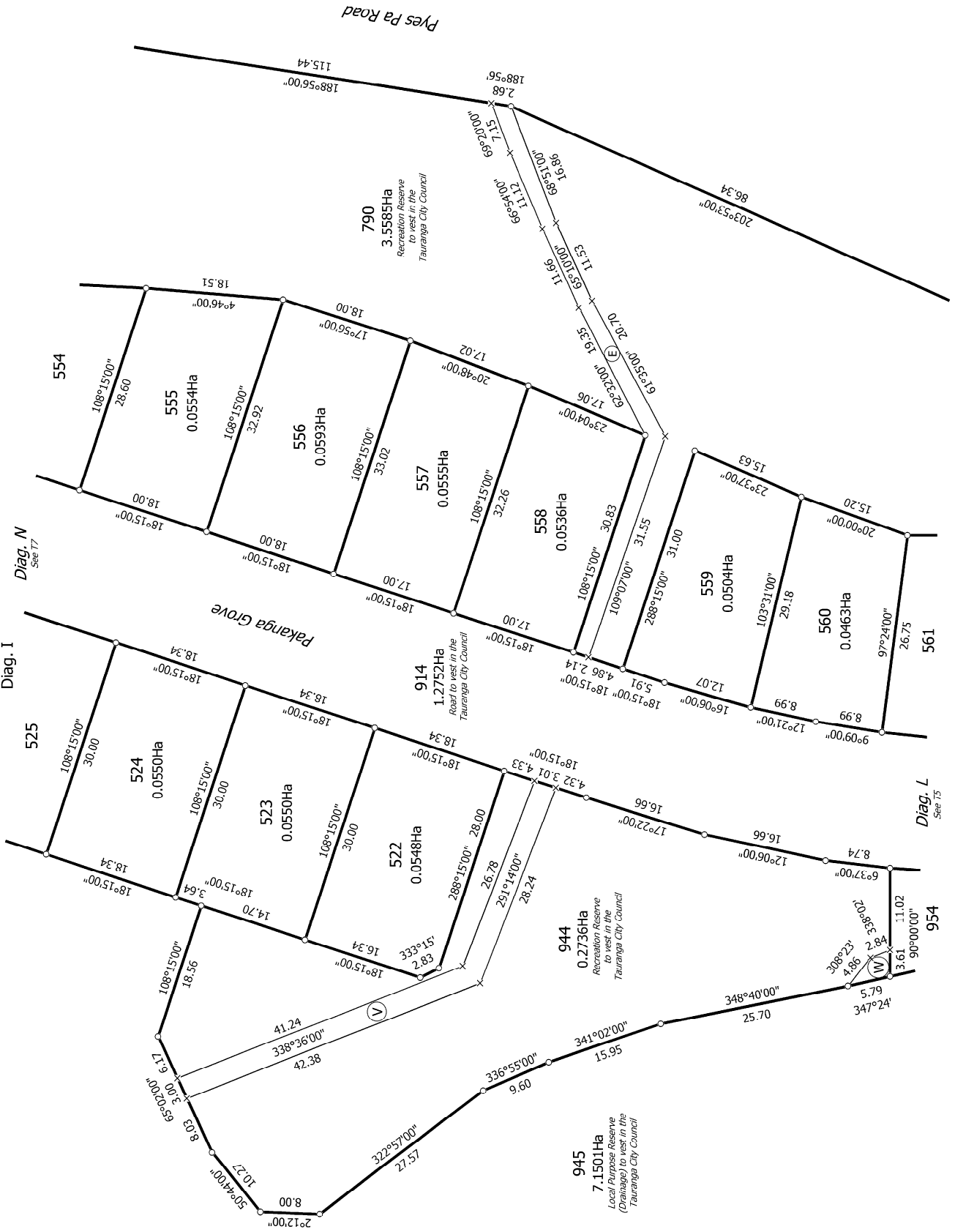
T 5/12

Land District: South Auckland
 Digitally Generated Plan
 Generated on: 13/04/2018 12:55pm Page 12 of 19

Lots 504-588, 790, 913-915, 943-945, 954 and 980-982 being a subdivision of Lot 1005 DP 507200

Surveyor: Michael Peter Dewhirst
 Firm: Harrison Grierson Consultants Ltd

Title Plan DP 519256
 Deposited on: 21/03/2018



T 6/12

Land District: South Auckland

Digitally Generated Plan

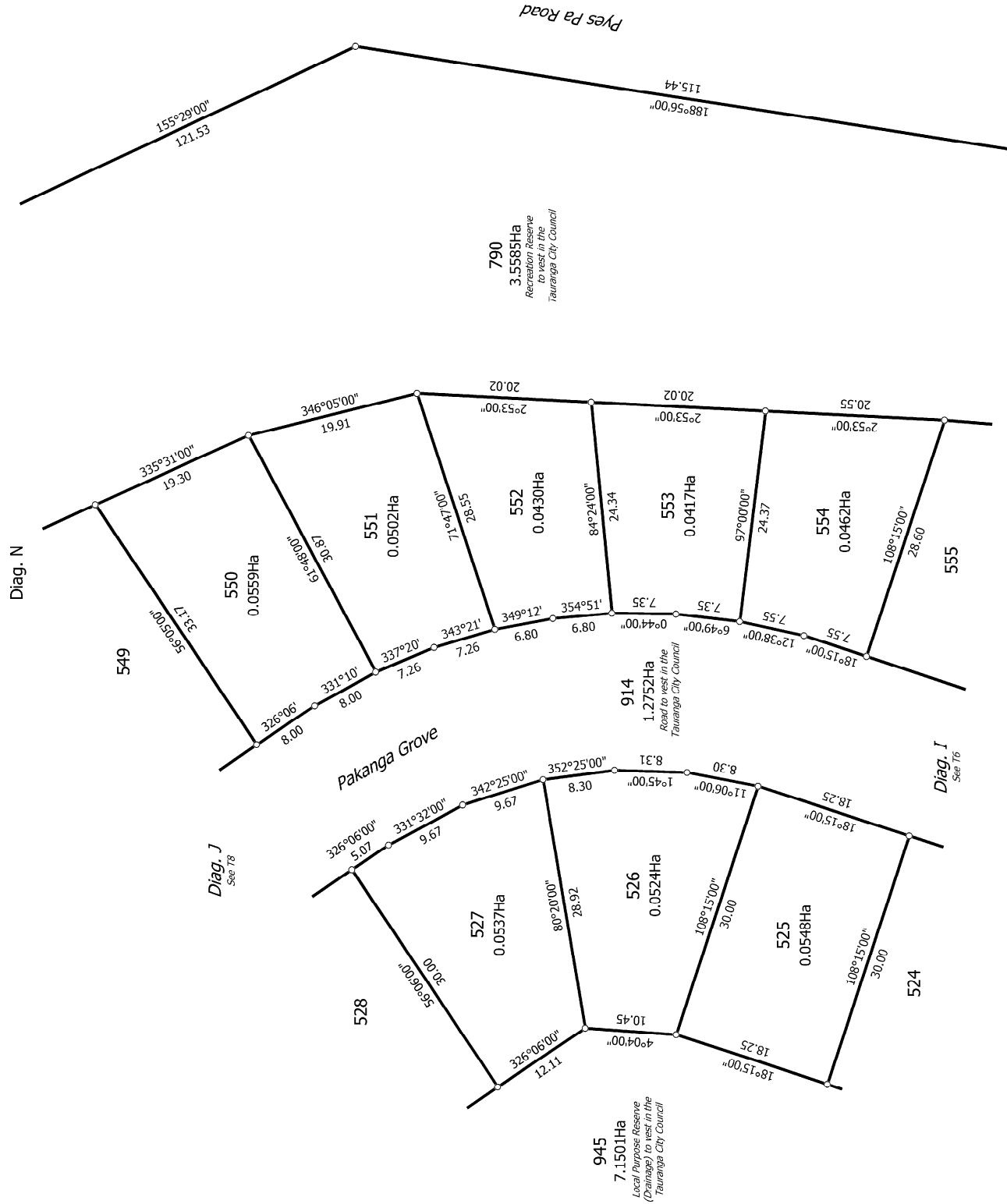
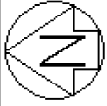
Generated on: 13/04/2018 12:55:56 PM Page 13 of 19

Lots 504-588, 790, 913-915, 943-945, 954 and 980-982 being a subdivision of Lot 1005 DP 507200

Surveyor: Michael Peter Dewhirst
Firm: Harrison Grierson Consultants Ltd

Title Plan
DP 519256

Deposited on: 21/03/2018



T 7/12

Land District: South Auckland
Digitally Generated Plan
 Generated on: 13/04/2018 12:55:56pm Page 14 of 19

Lots 504-588, 790, 913-915, 943-945, 954 and 980-982 being a subdivision of
 Lot 1005 DP 507200

Surveyor: Michael Peter Dewhirst
 Firm: Harrison Grierson Consultants Ltd

Title Plan
 DP 519256

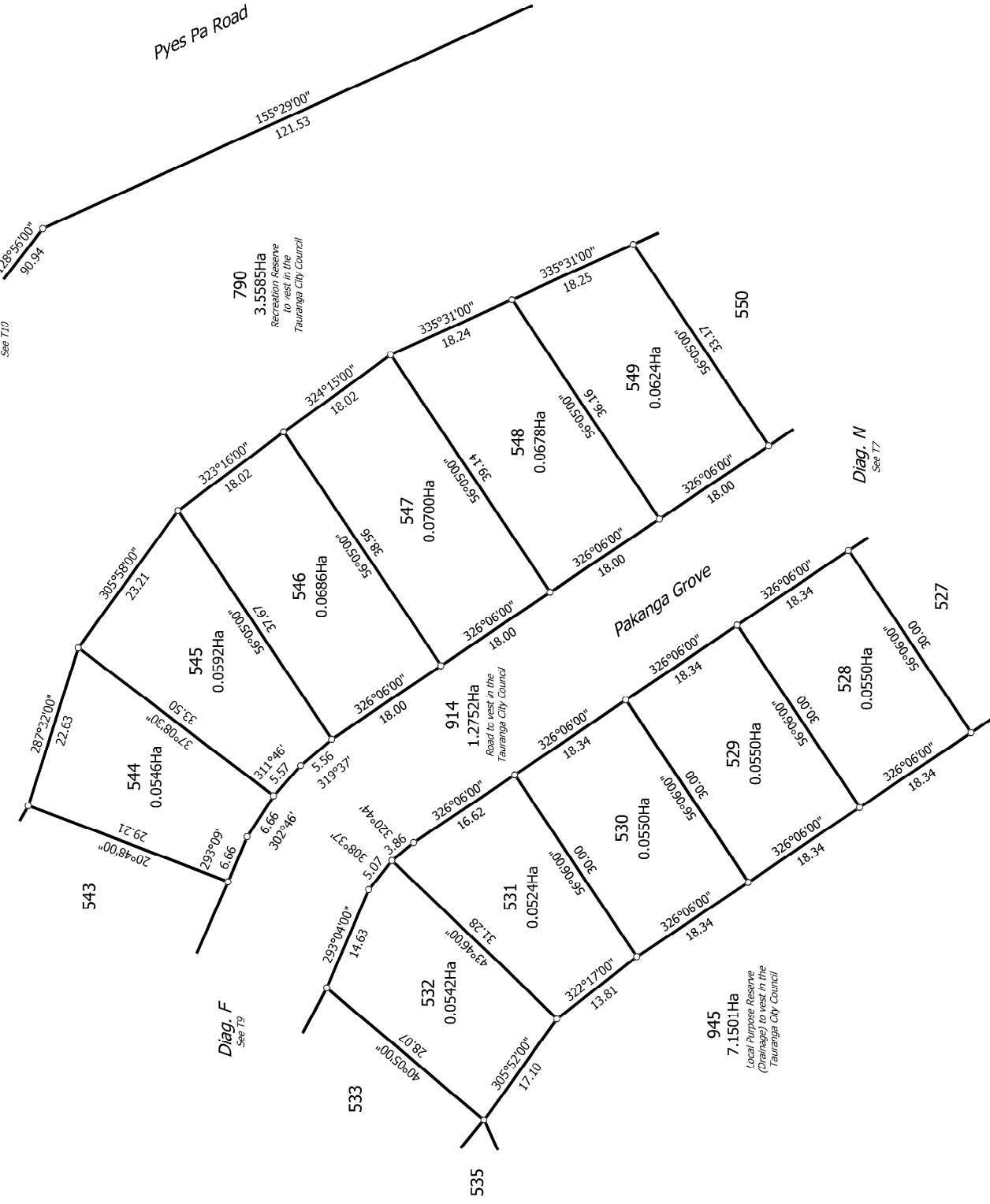
Deposited on: 21/03/2018



Diag. A
See T10

Diag. J

Diag. F
See T9



T 8/12

Land District: South Auckland

Digitally Generated Plan

Generated on: 13/04/2018 12:55pm Page 15 of 19

Lots 504-588, 790, 913-915, 943-945, 954 and 980-982 being a subdivision of

Lot 1005 DP 507200

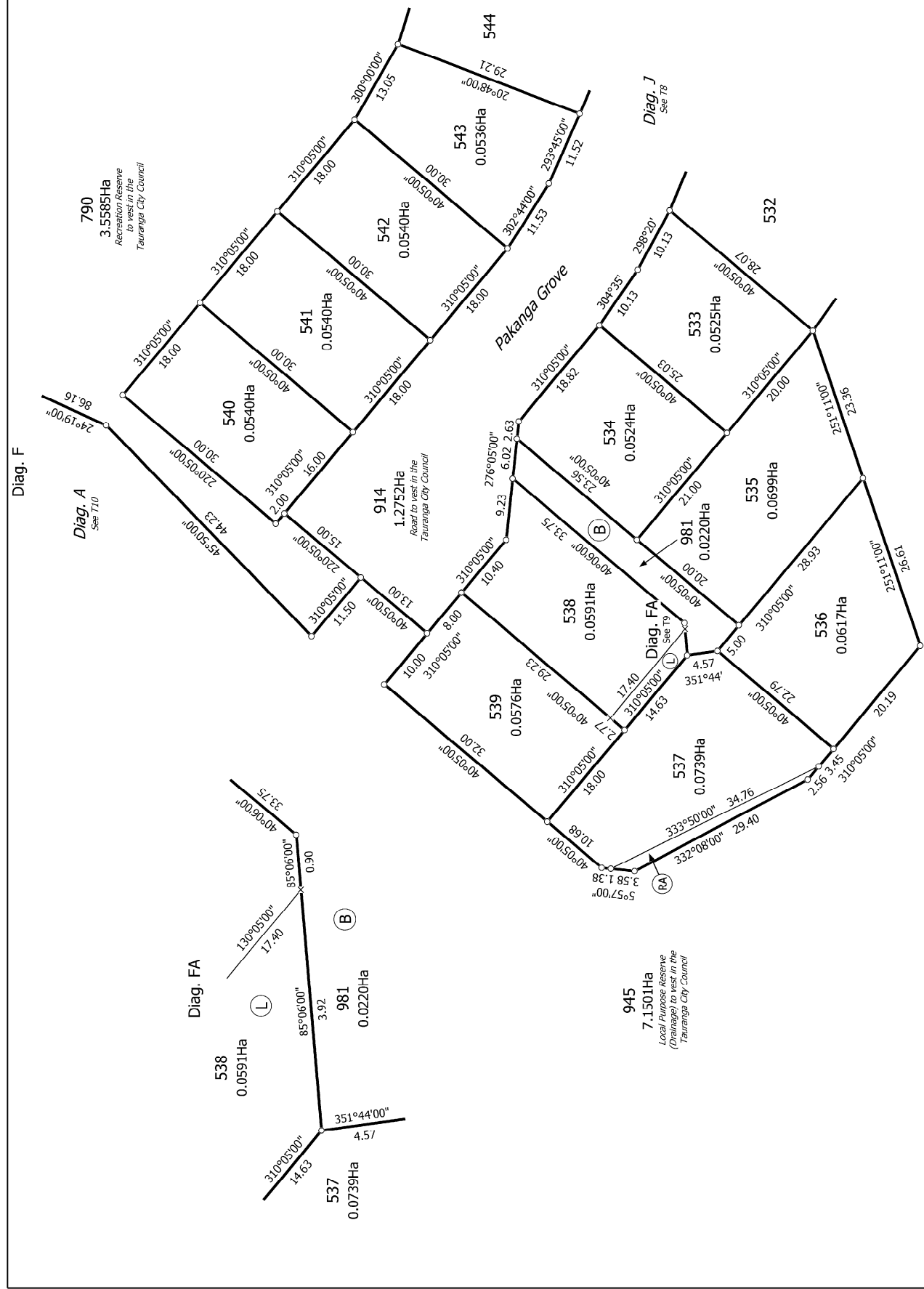
Surveyor: Michael Peter Dewhirst

Firm: Harrison Grierson Consultants Ltd

Title Plan

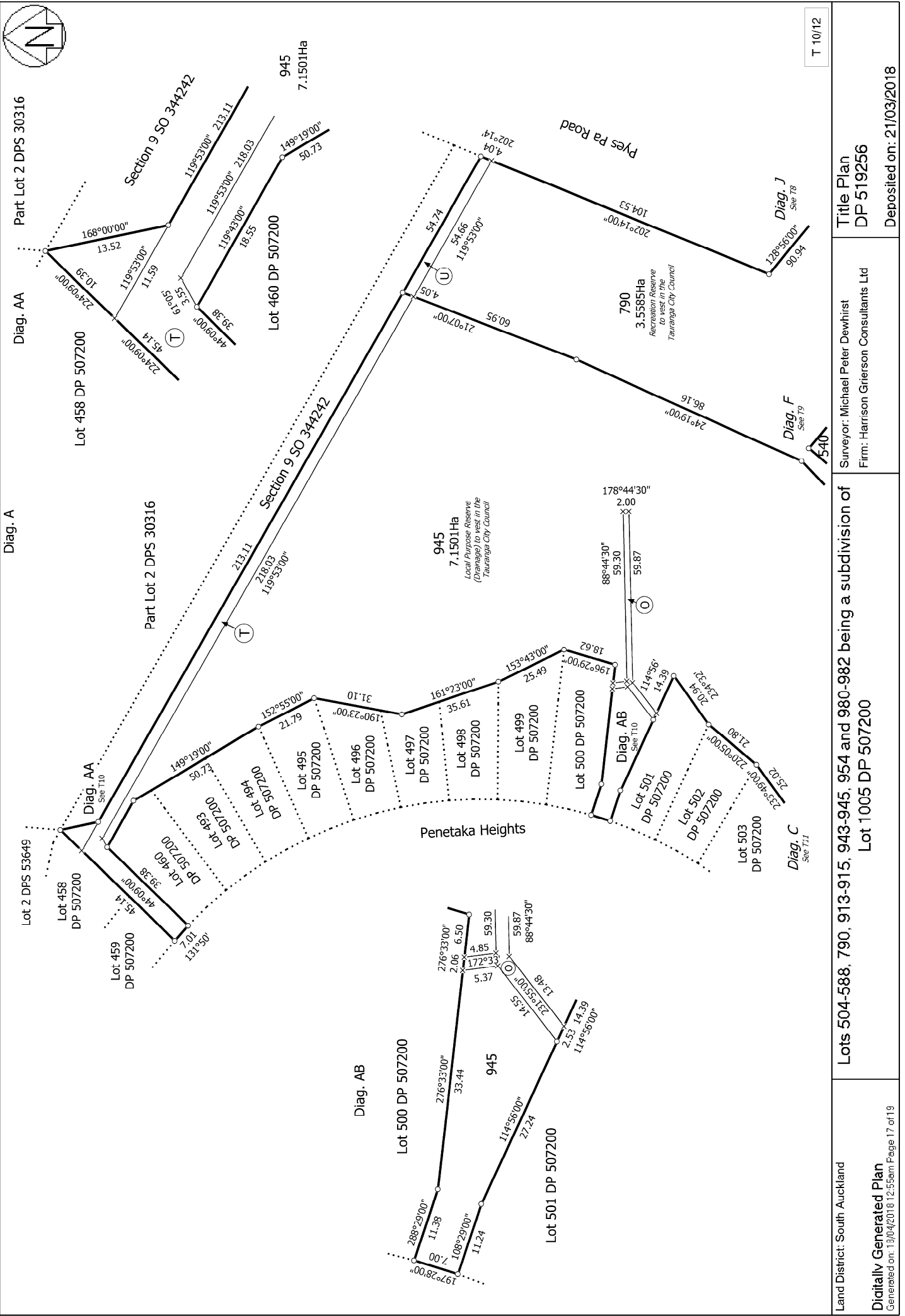
DP 519256

Deposited on: 21/03/2018



T 9/12

Land District: South Auckland	Surveyor: Michael Peter Dewhirst Firm: Harrison Grierson Consultants Ltd	Title Plan DP 519256
Digitally Generated Plan Generated on: 13/04/2018 12:55pm Page 16 of 19	Lots 504-588, 790, 913-915, 943-945, 954 and 980-982 being a subdivision of Lot 1005 DP 507200	
		Deposited on: 21/03/2018



T 10/12

Land District: South Auckland	Lots 504-588, 790, 913-915, 943-945, 954 and 980-982 being a subdivision of Lot 1005 DP 507200		Title Plan DP 519256
	Digitally Generated Plan Generated on: 13/04/2018 12:55pm Page 17 of 19		



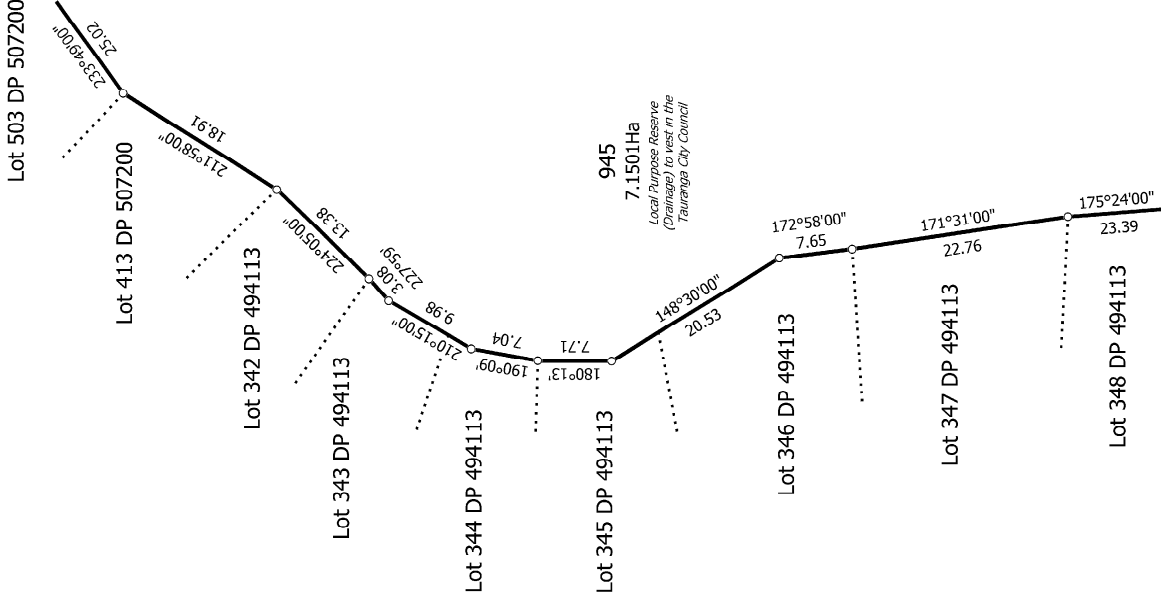
Diag. D

Diag. C
See T11



Diag. C

Diag. A
See T10



Diag. D
See T11

T 11/12

Land District: South Auckland

Digitally Generated Plan

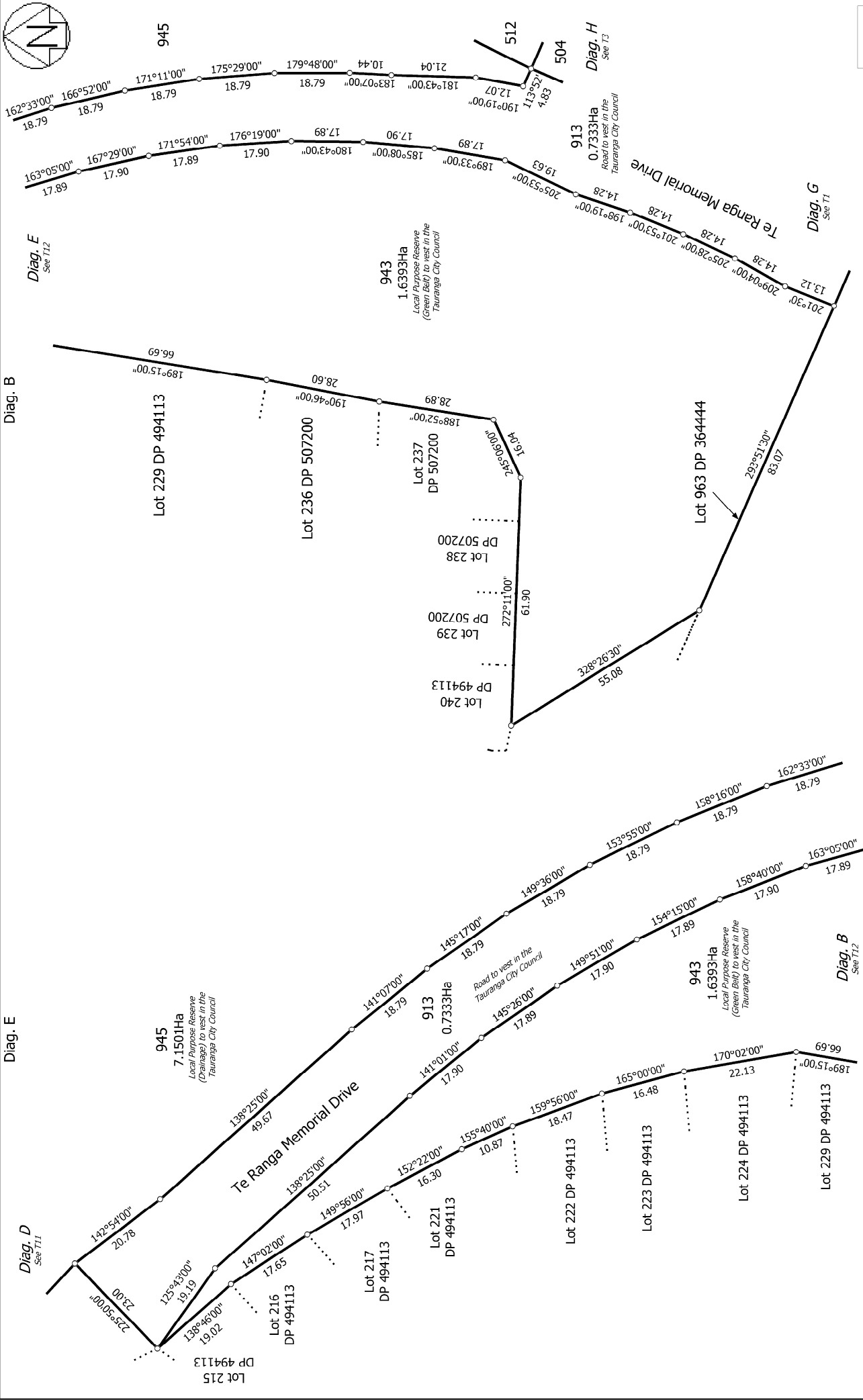
Generated on: 13/04/2018 12:55pm Page 18 of 19

Lots 504-588, 790, 913-915, 943-945, 954 and 980-982 being a subdivision of Lot 1005 DP 507200

Surveyor: Michael Peter Dewhirst
Firm: Harrison Grierson Consultants Ltd

Title Plan
DP 519256

Deposited on: 21/03/2018



T 12/12

Land District: South Auckland
 Digitally Generated Plan
 Generated on: 13/04/2018 12:55:56 PM Page 19 of 19

Lots 504-588, 790, 913-915, 943-945, 954 and 980-982 being a subdivision of
 Lot 1005 DP 507200

Surveyor: Michael Peter Dewhirst
 Firm: Harrison Grierson Consultants Ltd

Title Plan
 DP 519256

Deposited on: 21/03/2018